

HomeStar + DTE SecureCloud



—
C A S E
S T U D Y



YOUR BUSINESS TAKES YOU EVERYWHERE. TAKE IT WITH YOU.

Work better, faster, from anywhere.

Save money and optimize your technology investment.

Grow your business and scale based on need.

THE DTE SECURECLOUD DIFFERENCE

Not all Cloud Solutions are the same. Let more than 25 years of experience guide you into the next era of business technology.



World-Class data security background

Everything we do is built on a foundation of security.



Proven solution design

With hundreds of completed projects, we take you from start to finish.



Experienced techs, friendly support

Our techs are among the best – backed by Microsoft, HP, Fortinet, Cisco, and more.



We are invested in your success

We're a trusted partner that works tirelessly to help your organization succeed.

WHY HOMESTAR CHOSE DTE SECURECLOUD



BRIAN STAUFFENBERG
President - Homestar Insurance

Cloud Technology from Dura-Tech has given us immense flexibility and efficiencies that did not exist in our world only a few years ago. I also have the comfort of knowing that the award-winning Data Security practices that are employed by the Dura-Tech engineers has kept the vital client information we work with every day, safe and secure.

From our first "Cloud" benefits conversation to the post installation training, the Dura-Tech engineers have lived up to every promise that they made to us!

A Major Leap Forward

Dura-Tech completed a migration from the traditional office environment to a Hybrid Cloud environment for Homestar Insurance, a multi-location insurance provider.

Why Make the Move?

Moving to the Cloud allowed the Homestar employees the flexibility to work from anywhere without the need for a cumbersome VPN connection back to the onsite servers. All the while still maintaining exceptional data security and compliance standards.

With DTE SecureCloud, collaboration between employees is easier, data and applications are more accessible, and they are no longer reliant on a physical location to do business. Additionally, they reduced their dependence on hardware, such as on-premises servers and PCs, and they lowered their operating and CapEx costs!

PROJECT MANAGEMENT/ **HOW** WE MADE THE MOVE



MICHELLE BADE

Agency Operations Manager - Homestar Insurance

As Operations Manager, the idea of migrating to the Cloud platform was very exciting, but also a bit intimidating. The chance to further improve our operational efficiencies was really motivating for a process person like me!

Throughout the implementation, the Dura-Tech engineers were helpful, transparent, and remained in constant communication with us from start to finish. Onboarding our employees to the new system was seamless and with minimal downtime.

Thank you, Dura-Tech!



Real-World Benefits

Working with technology every day, the benefits of DTE SecureCloud technology are very apparent; it makes your organization more efficient, more responsive and lowers your operating costs!

Spending Time in DTE SecureCloud

For our engineers at Dura-Tech, the work doesn't stop once the project is finished. Our commitment to our clients is to monitor and maintain their technology, engage with their staff, and uncover and crush any issues that may arise. Since the migration for Homestar to their new DTE SecureCloud environment, we've constantly been in contact with them to ensure that the transition has been smooth and that everyone is working well with the new platform.

HomeStar staff feedback has been overwhelmingly positive! The accessibility and efficiency of Dura-Tech SecureCloud has put the employees a significant step ahead of their competitors. They are able to complete their work quicker, collaborate with one another much easier, and their new technology tools has even lifted company morale!

CLOUD

ACCESSIBILITY OF CLOUD – EMPOWERING THE WORKFORCE

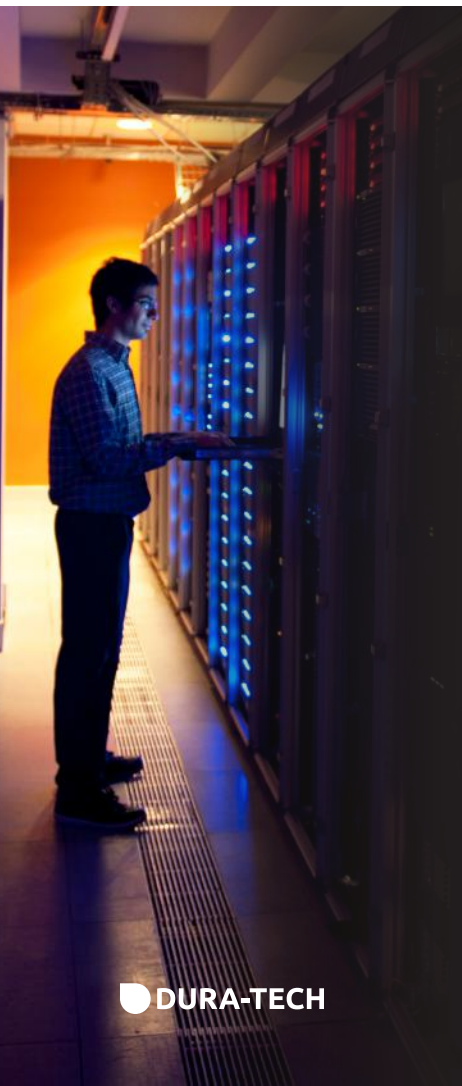


SUZIE WERNER

Account Executive - Employee Benefits
Homestar Insurance

I can't believe we didn't make the switch to Cloud sooner! Being able to access my work from outside of the office saves so much time and makes it easier to collaborate with my coworkers. No matter where I'm at, all my data is at my fingertips; I no longer waste time searching for files or waiting on documents. Now with greater versatility, I can focus more of my time building great client relationships!

Thank you, Dura-Tech!"



Take The Office with You

A leading benefit of the Cloud environment is the accessibility. Current offices with a traditional network setup are reliant on being in person to access their needed files. In the event of an emergency, you would need to make your way to the office as fast as possible, now you can take the office with you.

Empowering the Workforce

The accessibility of Cloud means a more collaborative workforce. Each employee can quickly and securely access their user account from any device and access their files seamlessly from the Cloud. Being out of the office no longer means being unavailable!

Reduce the amount of time lost from employees waiting for files and collaboration efforts revolving around their physical presence and outdated infrastructure. New technology is also something to be very excited about, raising morale and confidence in leadership providing them the right tools to work better!

RES“



JOSH STAUFFENBERG
Account Executive - Homestar Insurance

Dura-Tech has really elevated our technology to the next level with their SecureCloud solution! Since the final switch over, everyone on our team has been super impressed with the ease of use of our new system. We're working faster, easier, smarter, and I never have to worry about the security of the sensitive client information we deal with daily.

Thank you, Dura-Tech!

REAL WORLD RESULTS

Real-World Benefits

Working with technology every day, the benefits of DTE SecureCloud technology are very apparent; it makes your organization more efficient, more responsive and lowers your operating costs!

Spending Time in DTE SecureCloud

For our engineers at Dura-Tech, the work doesn't stop once the project is finished. Our commitment to our clients is to monitor and maintain their technology, engage with their staff, and uncover and crush any issues that may arise. Since the migration for Homestar to their new DTE SecureCloud environment, we've constantly been in contact with them to ensure that the transition has been smooth and that everyone is working well with the new platform.

HomeStar staff feedback has been overwhelmingly positive! The accessibility and efficiency of Dura-Tech SecureCloud has put the employees a significant step ahead of their competitors. They are able to complete their work quicker, collaborate with one another much easier, and their new technology tools has even lifted company morale!

ONBOARDING, TRAINING, AND SUPPORT



RHONDA BURLISON
Associate Account Executive - Homestar Insurance

When we were told that Dura-Tech was going to upgrade our entire IT network, I was worried that learning how to use it would be a big hassle, but their engineers were GREAT! They were friendly and they spoke technology to us in ways that we could understand.

Everyone's initial worries were quickly put to rest and their hands-on training was a game changer! Any questions we had were immediately addressed and very quickly we were all acclimated to our awesome new system.

Thank you, Dura-Tech!



A True Technology Partner

The Dura-Tech Team is dedicated to maximizing the benefits that our technology will bring to our clients. Our core mission at Dura-Tech is to ALWAYS be a trusted and reliable resource for our clients and their staff!

A Turn-Key Cloud Solution

A major question the Homestar team had when discussing the move to the DTE SecureCloud environment was about the learning curve for the new technology. Their confidence in our twenty-five-year reputation as a trusted technology provider made the decision easy. They knew we were going to deliver a turn-key solution with complete training and on-boarding to support them throughout the process, which moved the HomeStar Insurance Team forward with their decision.

Once the migration was completed, training sessions were held at each of their locations by a dedicated Dura-Tech engineering resource. These training sessions were interactive, allowing employees to ask any questions during our demonstrations of their new SecureCloud configuration. Our Dura-Tech engineers remained in constant communication throughout the first week of implementation for real-time assistance on any issues that arose.



AN AWARD WINNING DATA SECURITY PARTNER



Channel Futures.
Leading Channel Partners Forward

MSP 501
2021 WINNER



Dura-Tech Enterprises

TOP
FORTINET
CONSULTING/SERVICE
COMPANIES 2020

Recognized by
SECURITY

LET'S GET TO WORK

815 468 6165
sales@dura-tech.com

